



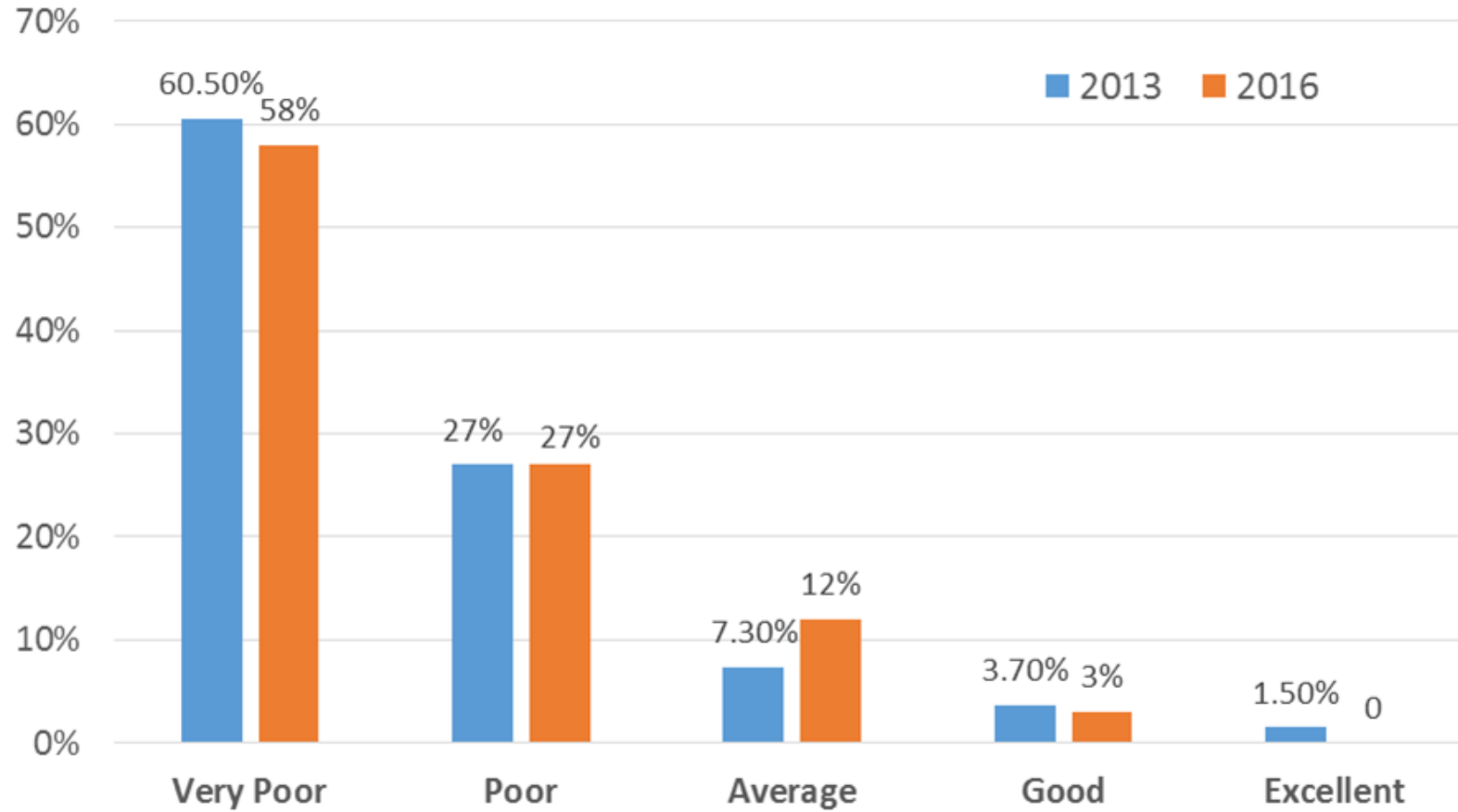
Kingdom of the Netherlands



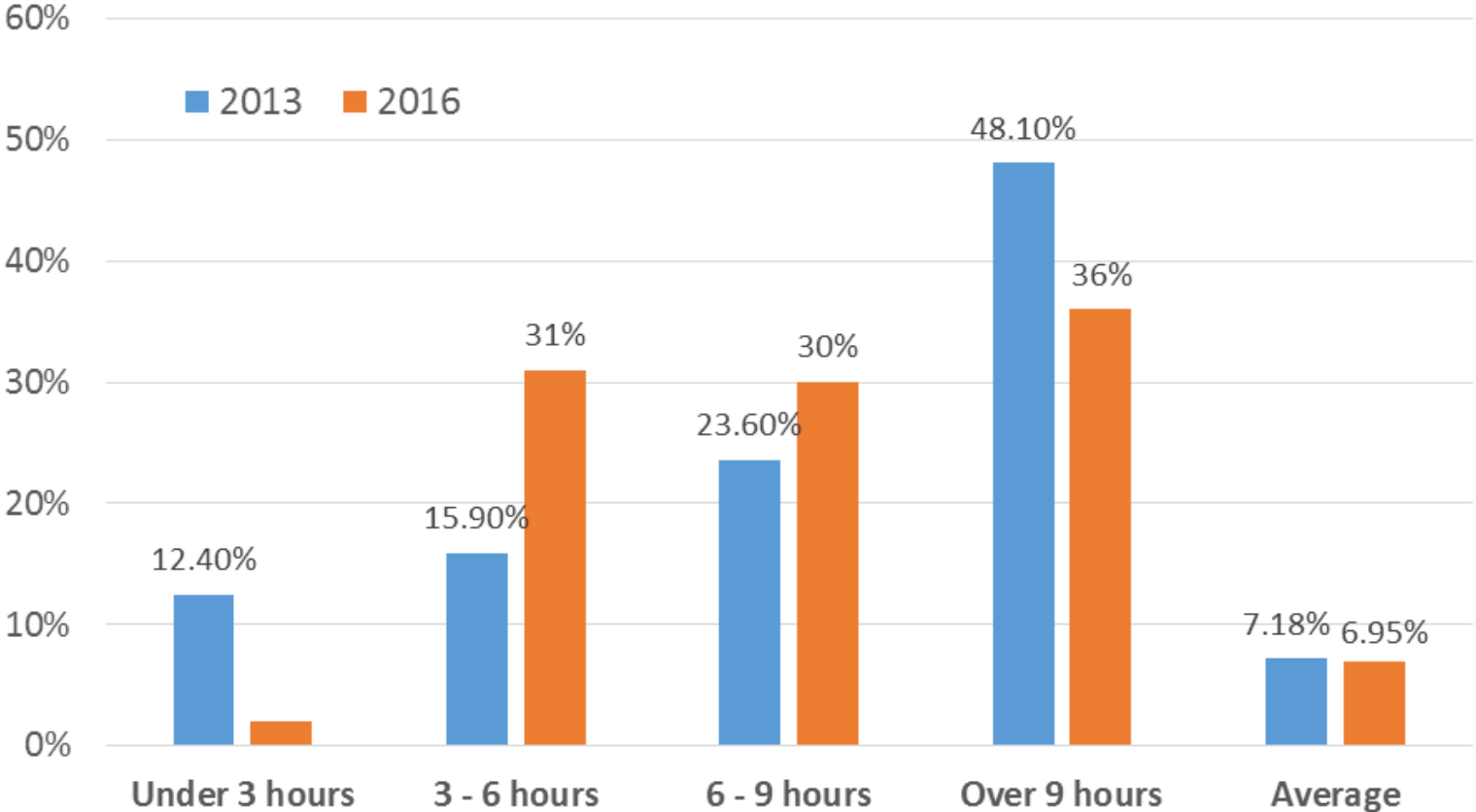
# Overview of the Power Sector; a Social Perspective

**Hassan Harajli**  
**Tuesday 21<sup>st</sup> Feb. 2017**

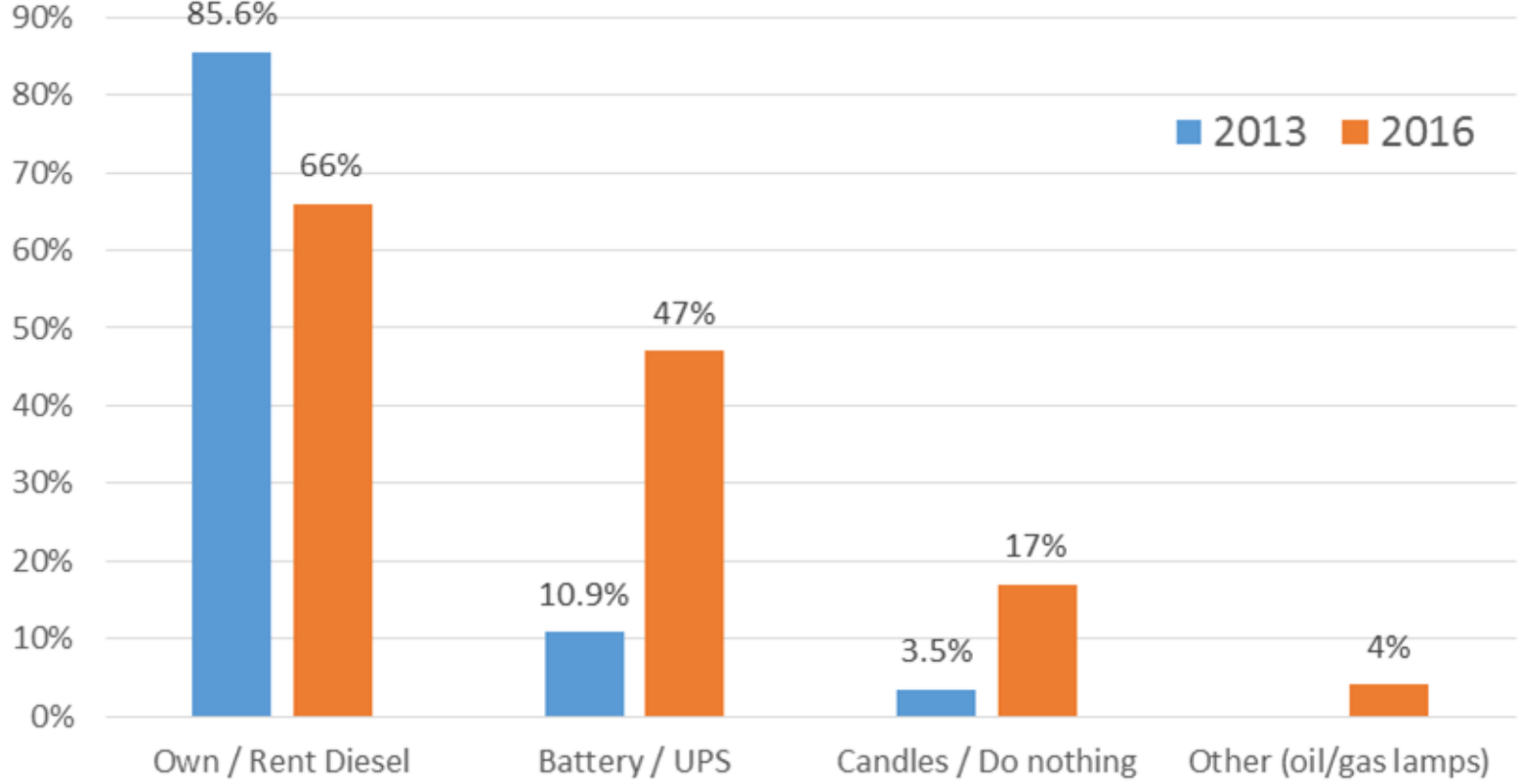
# Perception of the Power Sector



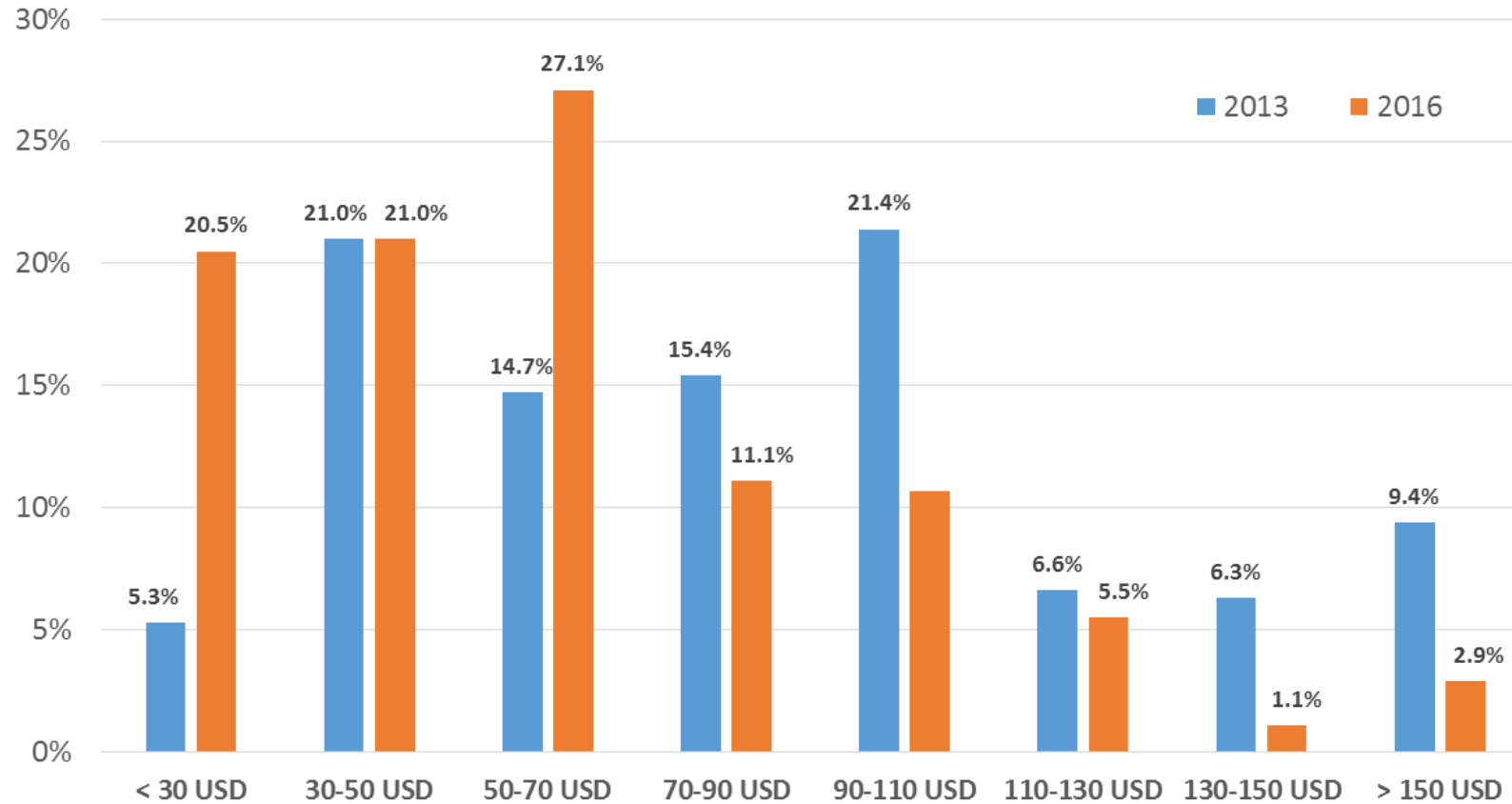
# Power Provision



# Averting Expenditure



# Monthly Payment on Backup Power

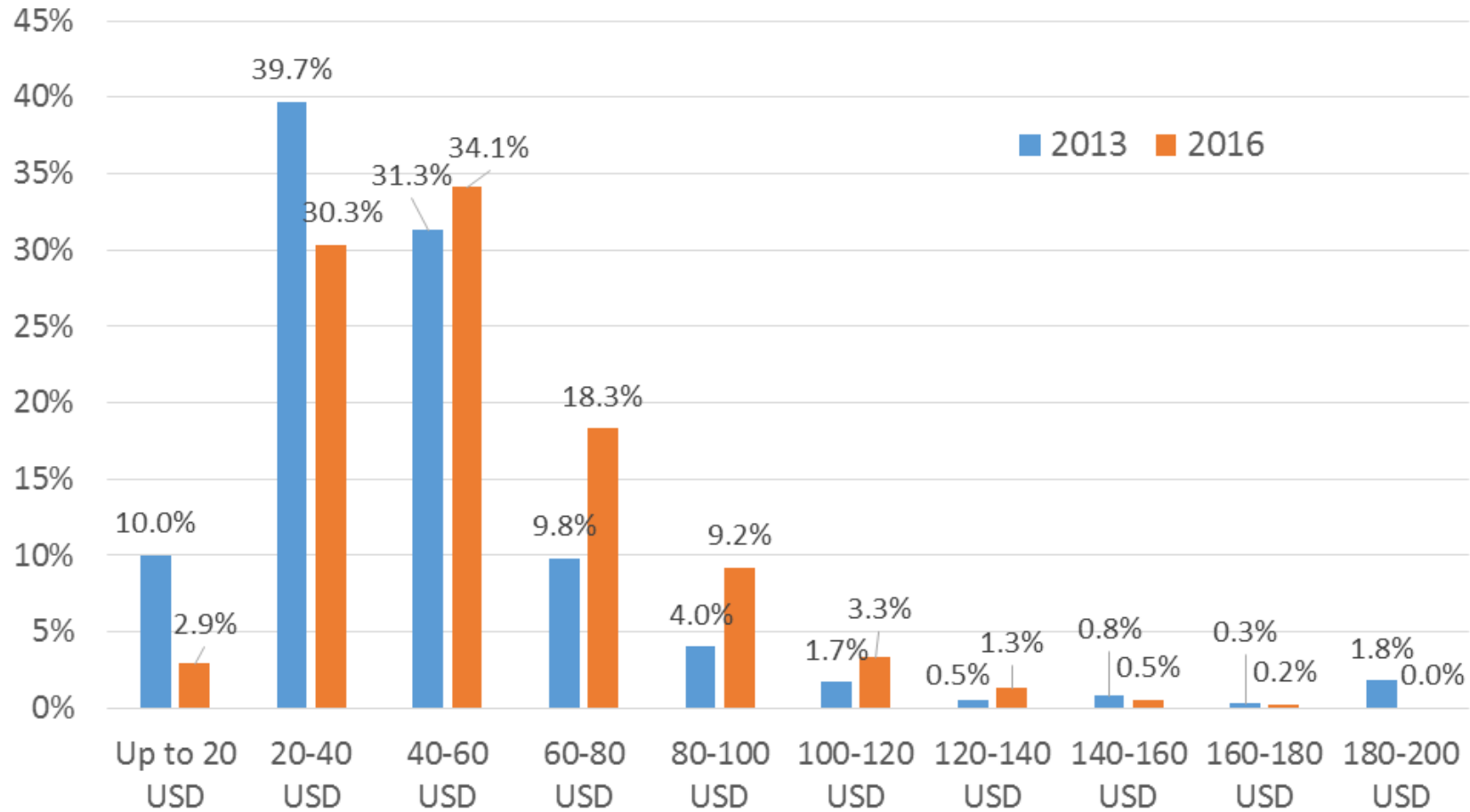


Mean  
(USD)

2013  
91.61

2016  
59.43

# Monthly Payment to EDL

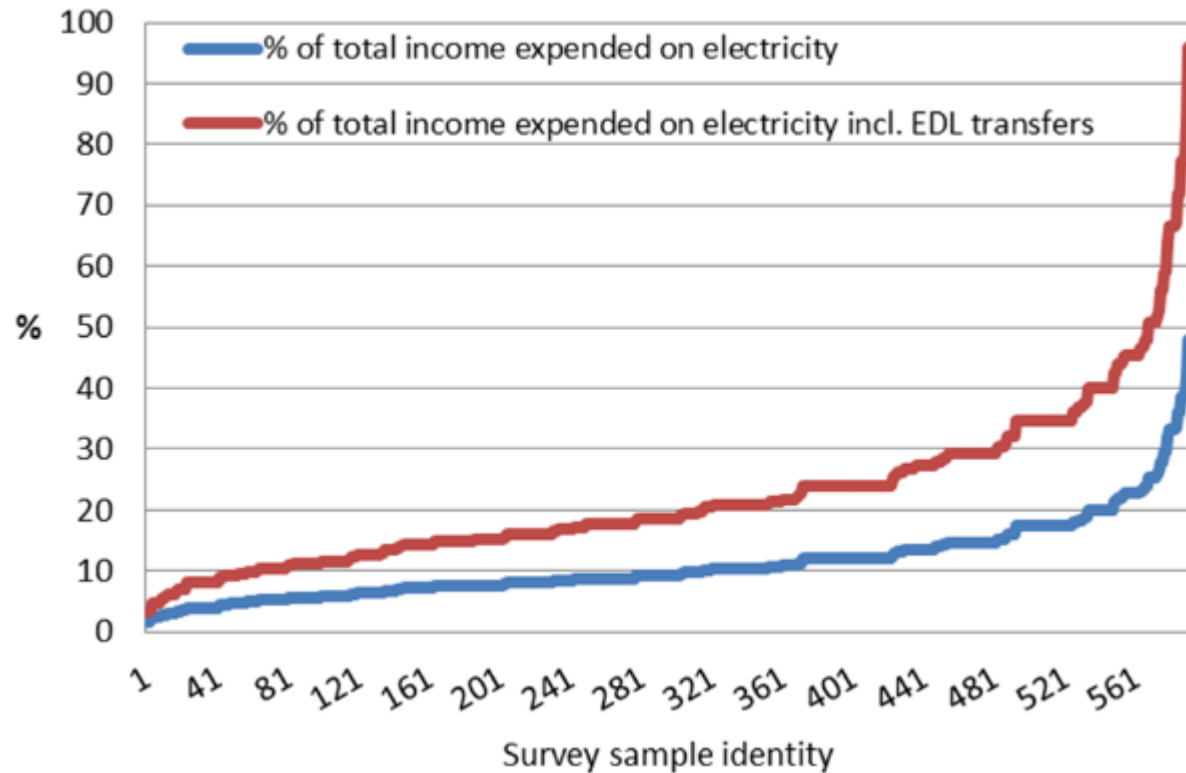


Mean  
(USD)

2013  
47.8

2016  
53.8

# The economic and financial burden: Percentage of income spent on energy (2013)



- App. 11.2% of average household income is spent on electricity in Lebanon.
- Approximately 50% of Lebanese citizens pay more than ten percent of their income on electricity in Lebanon.
- Including EDL transfer raises the average percentage of income spent on electricity in Lebanon for the residential sector to 16.64%.

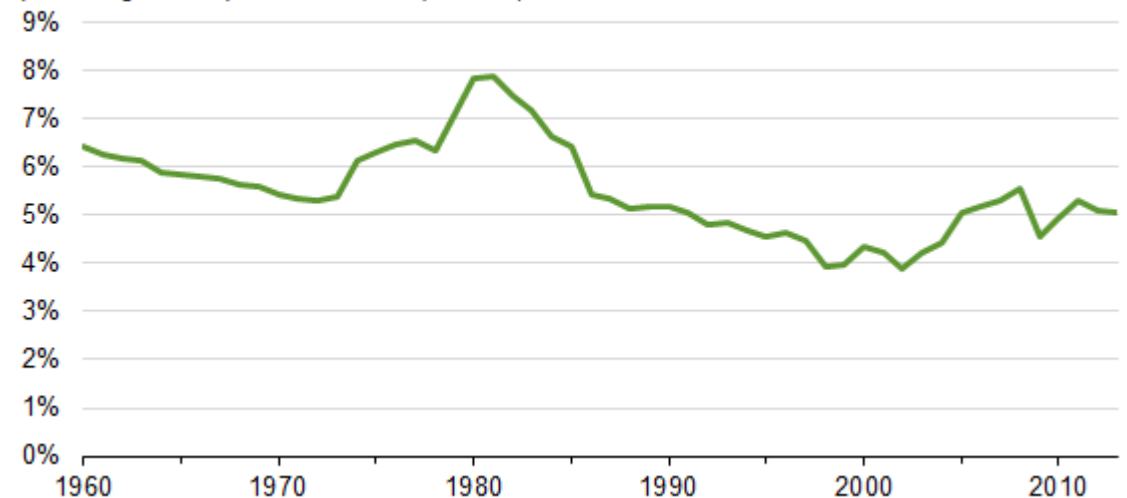
## The economic and financial burden: Percentage of income spent on energy (2016)

Total Payments on electricity (per month per household)	
2013	2016
139.4 USD	113.2 USD

- We can assume, based on the reduction of expenditure on energy, that 9% of income is spent on electricity in 2016 (as opposed to 11.2% in 2013).
- Accounting for EDL subsidies, household income spent on electricity grows to 12.4%.

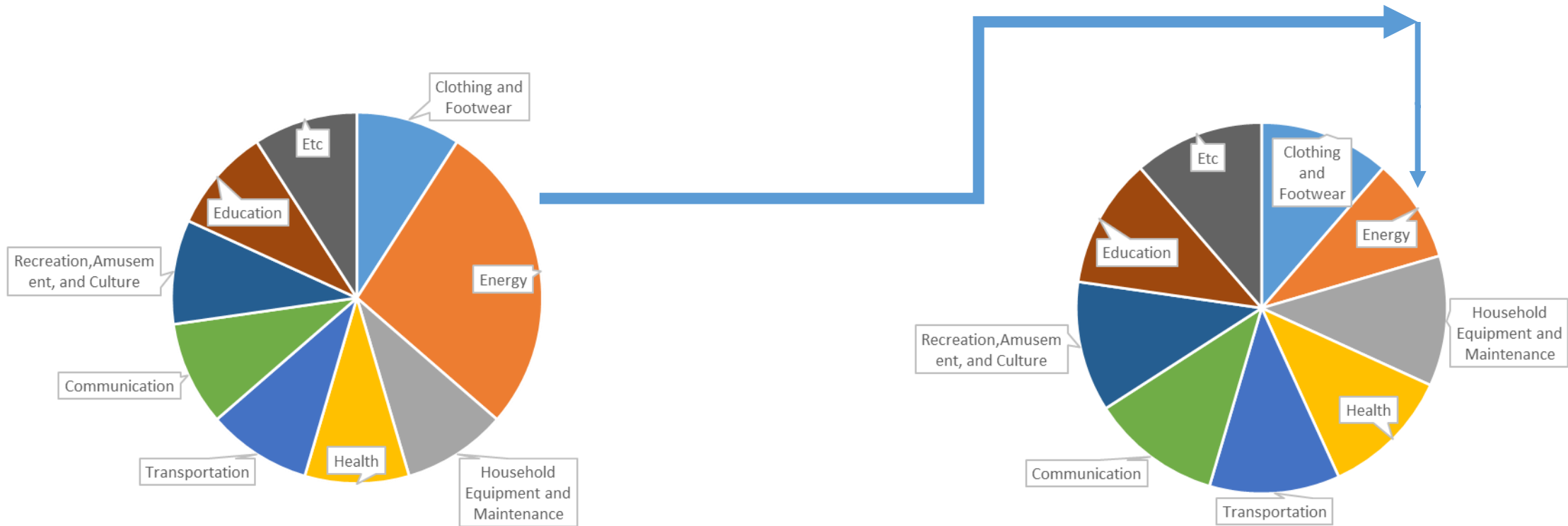
### Comparing Lebanon to the US

Consumer energy expenditures' share of disposable income (1960-2013)  
percentage of disposable income (nominal)

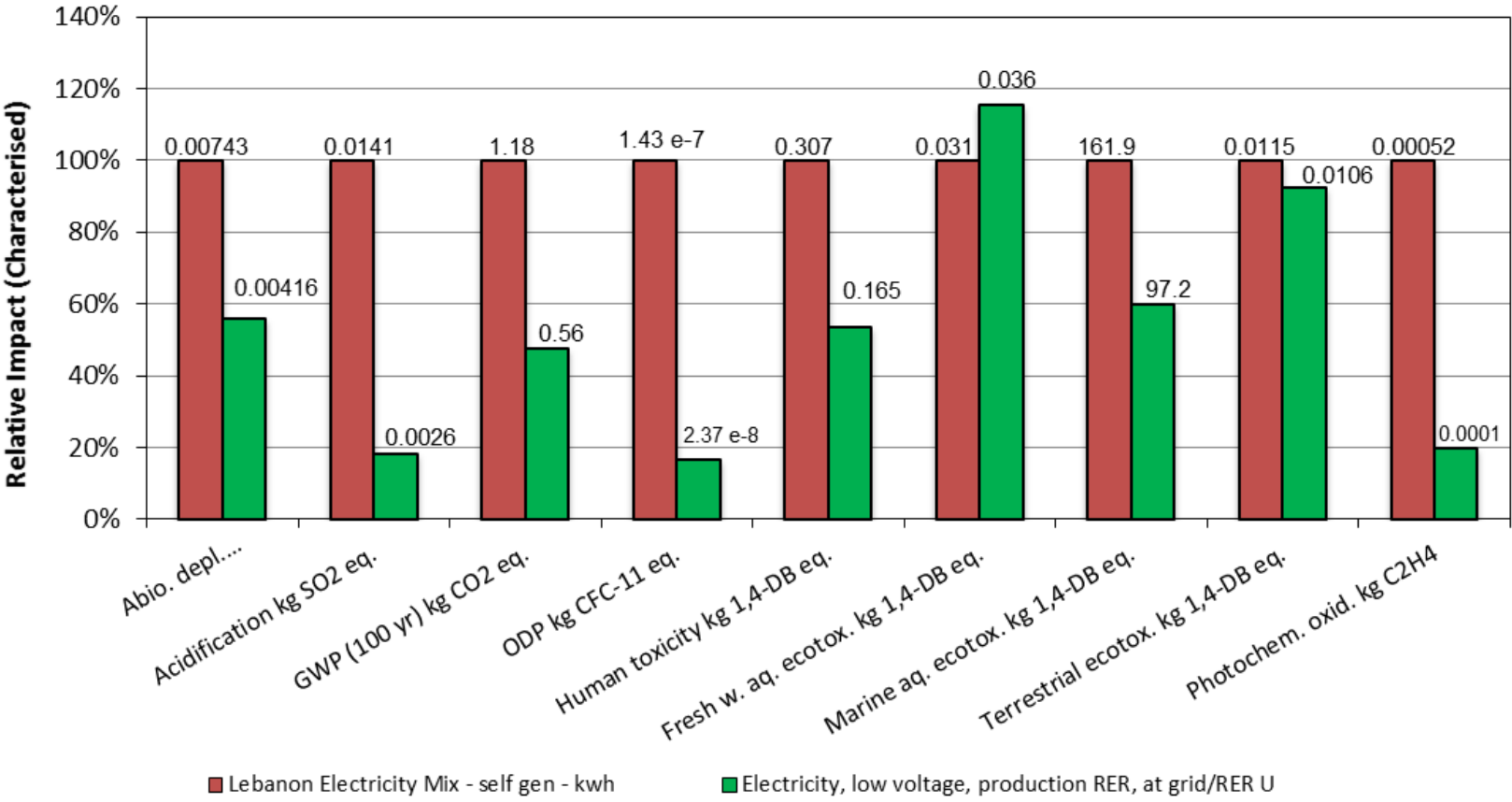




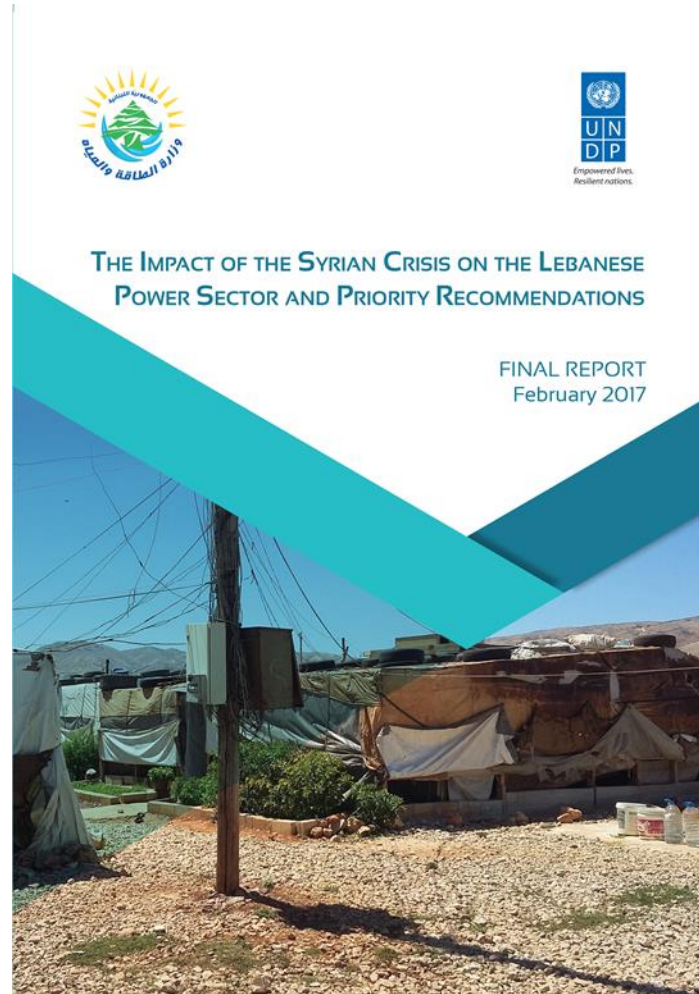
# Assisting in a reallocation of income



# Environment and Health



# The impact of the Syrian Crisis on the Lebanese Power Sector & Priority Recommendations





Kingdom of the Netherlands



**Thank you**